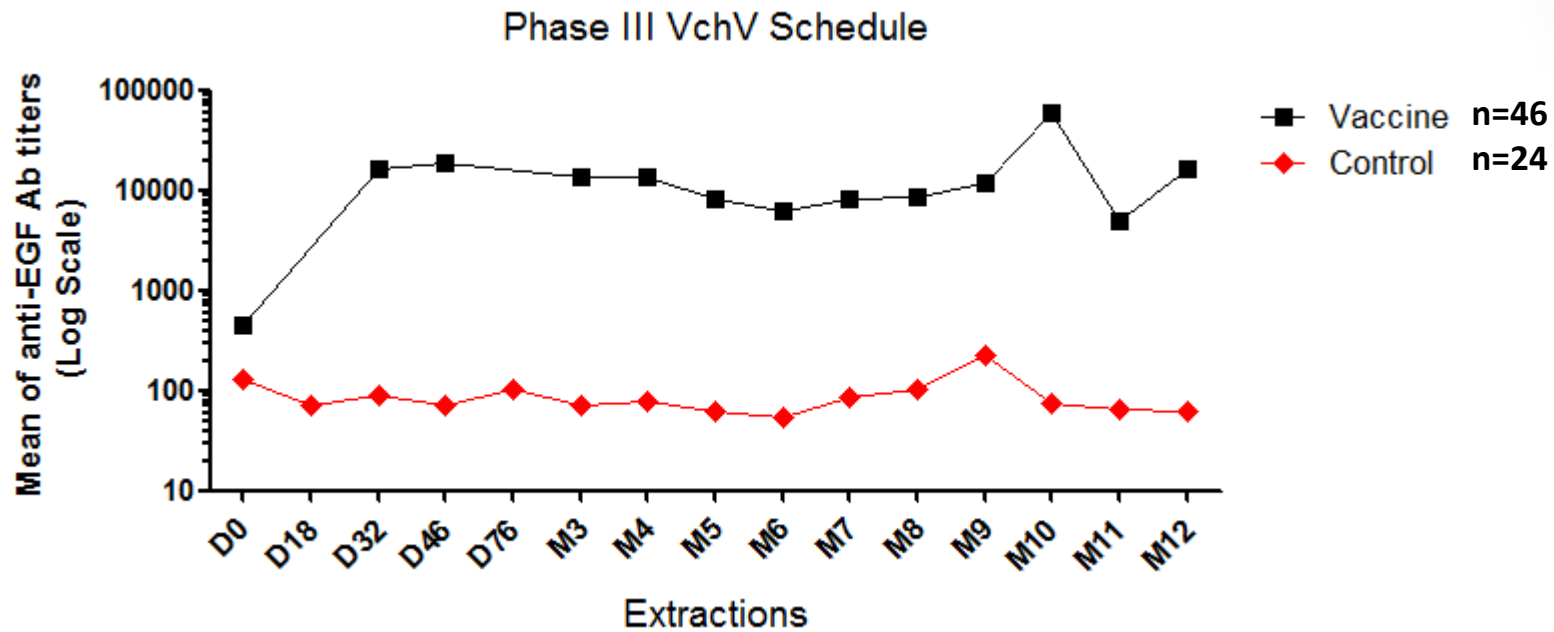


4th Global Meeting EGF Vaccine

Phase II/III VChV Schedule: Immune Response Analysis

*Lic. Xitlally Popa Navarro
Clinical Immunology Department
Center of Molecular Immunology*

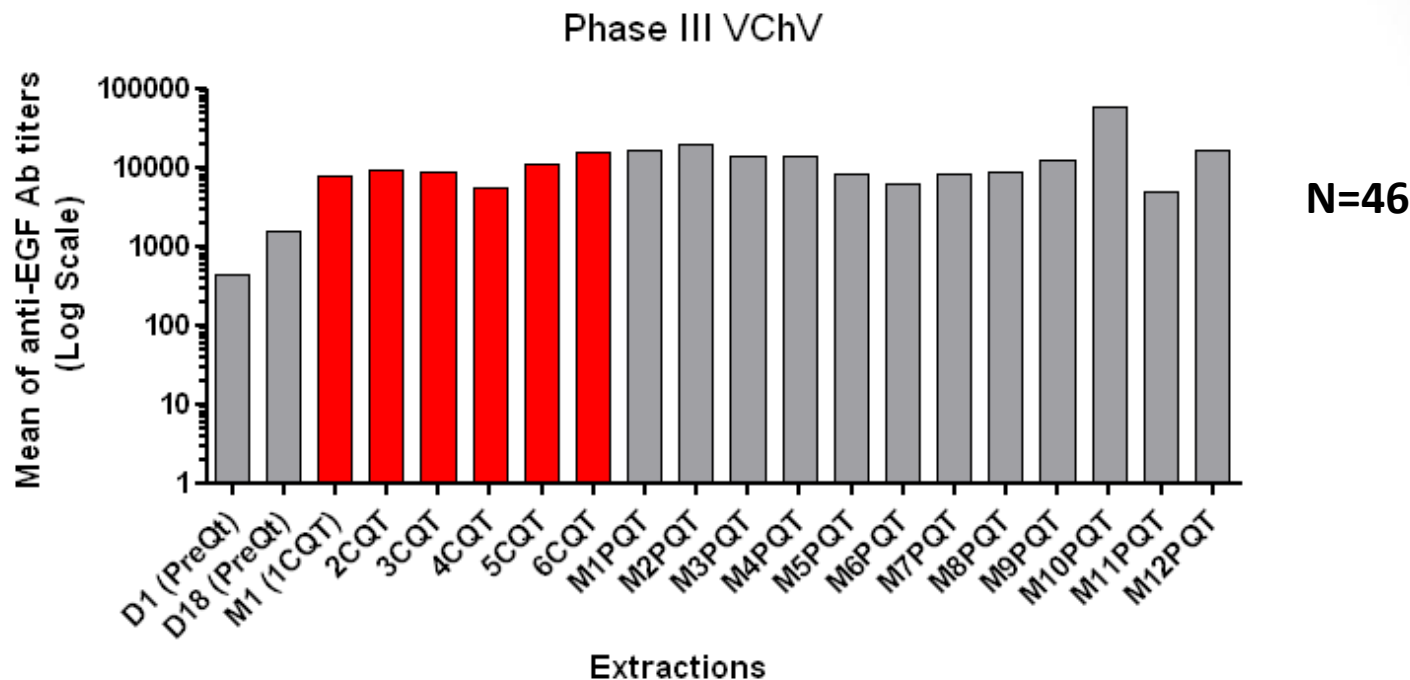
Kinetics of Ab Titers



Anti-EGF Ab titers were significantly greater in vaccinated patients.

The antibody response to EGF is not affected during the administration of chemotherapy

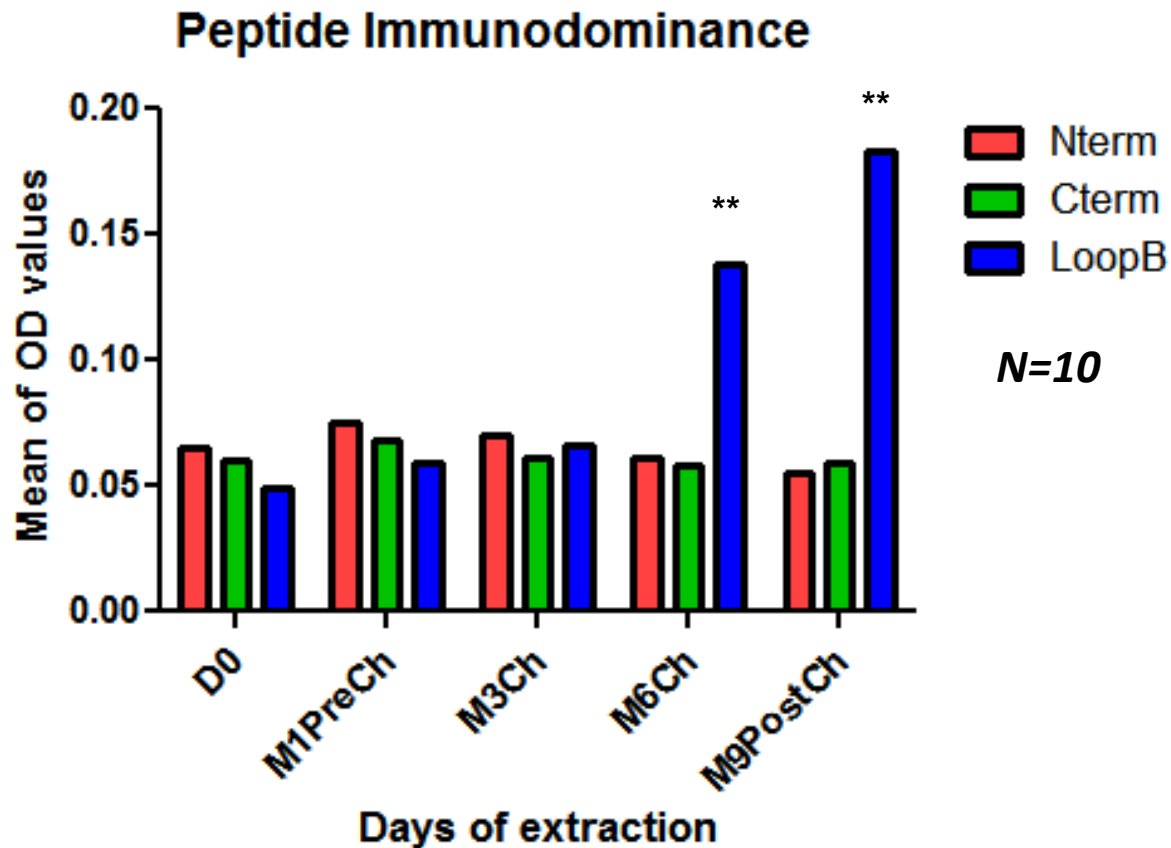
Kinetics of Ab Titers



	D0	1cCh	M1PosCh.	M3PosCh.	M6PosCh.
Mean	4435	7723	16093	13670	6092
Median	100	1500	4000	4000	4000
Geometric Mean	230.6	2161	4937	3211	3498
n	46	30	22	23	12

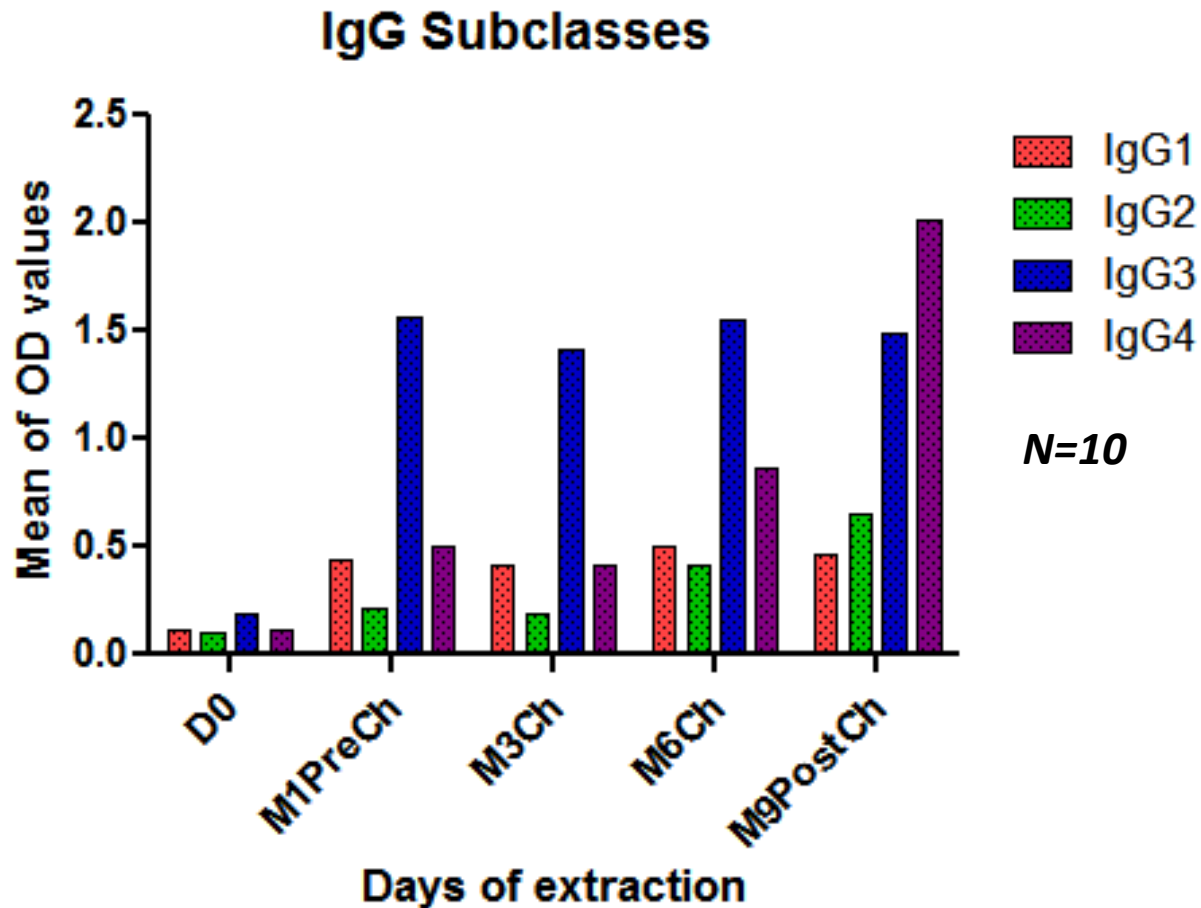
Peptide Immunodominance

The antibody response is mainly directed against the LoopB of the EGF molecule



IgG Subclasses

The predominant IgG subclasses are
IgG3 and IgG4



Concluding remarks

- The immunization with EGF generates a greater antibody response in the group of vaccinated patients.
- The EGF-specific antibody response is mainly IgG3 and IgG4 subclass in all evaluated patients.
 - The EGF-specific antibody response is mainly directed toward the central EGF/EGFR binding region (Loop B) in a subset of patients.
- The magnitude of anti-EGF antibody titers is not affected by the administration of chemotherapy.

Ongoing & Future Experiments

Ongoing Experiments

- Determination of inhibition of the EGFR activation by patients sera.
- Determination of the affinity maturation of IgG response by Biacore Technology.

Future Experiments

- Determination of Th response pattern by Luminex.
- Determination of the specific cellular immune response by ELISPOT.

Acknowledgments

Patients

Center of Molecular Immunology

Clinical Immunology Department

Zuyen Castillo Tech.
Beatriz Garcia MSc.
Annely Gonzalez Tech

Clinical Trials Department

Carmen Elena Viada MSc
Patricia Luaces MSc
Camilo Rodriguez
Tania Crombet

Clinical Institutions

Clinical Researchers

Clinical Staff

Gracias!!!

Thanks!!!